

Incubator | shaking

front door-type, up to 60°C / 10°C - 60°C (refrigerated), 30-250 rpm, orbital motion



Orbital motion



Wise remote

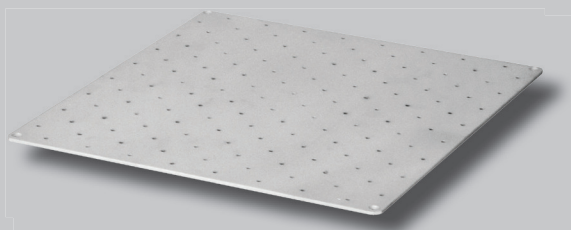


Jog-Shuttle controller

IQ | OQ
available
page 12 for details



WIS-30 with universal platform (included)



WIS-30 front door, 60°C, orbital

Ideal for:

- biological cultures under various temperatures

Features:

- front door and sliding platform provides easy loading and handling of samples
- RS232C interface for monitoring and controlling (WireRemote)
- advanced shaking mechanism provides quiet shaking and precise speed control
- stabilized orbital motion, minimum noise and no vibration
- universal platform included
- accommodates flasks up to 1000 ml
- durable and flexible plastic flask holder (optional)
- universal spring rack for various flask shapes/sizes (optional)
- stainless steel interior and powder-coated body
- backlight LCD display
- CE certified and unique serial number for tracing

Safety mechanism:

- overheat and over-current protection
- leakage breaker
- automatic operation stop when door opens

Controller:

- digital fuzzy controller with **Jog-Shuttle-switch** (turn + push)

Model	WIS-30	WIS-30R
Temperature range	room temperature +5°C - 60°C	10°C - 60°C (refrigerated)
Temperature accuracy & uniformity	accuracy: ±0.2°C at 37°C, uniformity: ±0.5°C at 37°C	
Temperature sensor	PT100 sensor	
Heater	600 W	800 W
Compressor	none	190 W
Compressor control	none	refrigerator control for preventing overload
Refrigerant	none	CFC-free (134A) refrigeration system
Shaking speed & stroke	30 - 250 rpm, 25 mm orbital motion	
Timer & alarm	99hr 59 min (delay & continuous run), error status and timer end	
Max. capacity of flask holder 50-100 ml	35 pcs. flask holder for 50 - 100 ml flasks	
Max. capacity of flask holder 200-300 ml	16 pcs. flask holder for 200 - 300 ml flasks	
Max. capacity of flask holder 500 - 1000 ml	12 pcs. flask holder for 500 - 1000 ml flasks	
Internal dimensions (W x D x H)	570 x 465 x 470 mm	
External dimensions (W x D x H)	916 x 730 x 683 mm	
Packing size & gross weight	1050 x 900 x 900 mm, 146 kg	1050 x 900 x 900 mm, 156 kg
Power supply	1 Phase AC 120V, 60 Hz or AC 230V, 50/60 Hz	
Power consumption	600 W	1,3 kW
Order number 230V	DH.WIS00230	DH.WIS01230
Order number 120V	DH.WIS00130	DH.WIS01130

Accessories: Suitable platforms, racks and flask holder can be found on page 75