

Manifold with stopper

MultiVac 310-MS

Ideal for:

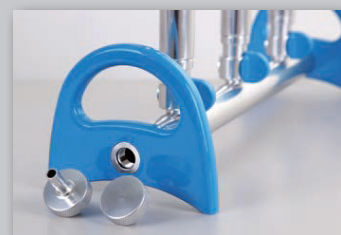
- filtration for microbiology tests
- chemistry experiments
- general laboratory filtration

Features:

- MultiVac 310-MS is made of anodized aluminium
- includes 3x silicone stopper No. 8 to fit various types of filter holder
- each branch permits individual control
- quick-fit hose barb can be connected to both sides



MultiVac 310-MS



Example use

Model	MultiVac 310-MS	
Number of branches	3	
Port thread	5/16 inch (8mm)	
Dimensions (LxWxH)	47 x 13 x 16 cm	
Parts		
Body	Anodized aluminium	
Control valve	Anodized aluminium	
Handle	Anodized aluminium	
Hose barb	Anodized aluminium	
Order number	00829 180310-01	

Suitable filter holder:

Model	Filter Ø	Connection	Material	Page
VF5	25mm	stopper & clamp	glass	156
VF8	25mm	stopper & clamp	glass	156
VF7	47mm	stopper & clamp	glass	157
VF6	47mm	stopper & clamp	glass	157
VF2	47mm	stopper & spin-lock	stainless steel	159

Model	Filter Ø	Connection	Material	Page
VF11	47mm	stopper & spin-lock	stainless steel	159
LF32	47mm	stopper & spin-lock	stainless steel	161
LF33	47mm	stopper & spin-lock	stainless steel	161
LF3/5	47mm	stopper & spin-lock	PES	162
MF3/5	47mm	stopper & magnet	PES	163

Manifold with stopper

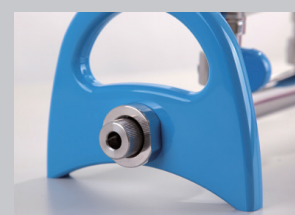
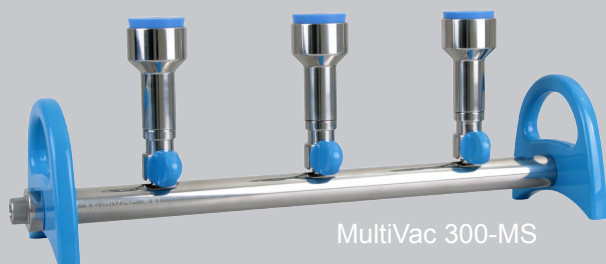
MultiVac 300-MS | MultiVac 600-MS

Ideal for:

- filtration for microbiology tests
- chemistry experiments
- general laboratory filtration

Features:

- MultiVac MS is made of anodized aluminium and stainless steel
- includes silicone stopper No. 8 to fit various types of filter holder
- each branch permits individual control
- adjustable vent valve design helps to drain residual liquid off the tube
- innovative vent valve design prevents from water hammer phenomenon
- quick-fit hose barb can be connected to both sides



Model	MultiVac 300-MS	MultiVac 600-MS
Number of branches	3	6
Filter diameter	47mm / 50mm	47mm / 50mm
Funnel capacity (possible)	100ml / 300ml / 500ml	100ml / 300ml / 500ml
Effective filtration area	9.6cm ²	9.6cm ²
Port thread	5/16 inch (8mm)	5/16 inch (8mm)
Dimensions (LxWxH)	48 x 13 x 11 cm	85 x 13 x 11 cm
Parts	Material	Material
Body	Stainless steel SS316	Stainless steel SS316
Connector	Stainless steel SS316	Stainless steel SS316
Filter funnel	Stainless steel SS316	Stainless steel SS316
Funnel support base	Stainless steel SS316	Stainless steel SS316
Control valve & handle	Anodized aluminium	Anodized aluminium
Order number	00829 180300-01	00829 180600-01

Suitable filter holder:

Model	Filter Ø	Connection	Material	Page
VF5	25mm	stopper	glass	156
VF8	25mm	stopper	glass	156
VF7	47mm	stopper	glass	157
VF6	47mm	stopper	glass	157
VF2	47mm	stopper & spin-lock	stainless steel	159

Model	Filter Ø	Connection	Material	Page
VF11	47mm	stopper & spin-lock	stainless steel	159
LF32	47mm	stopper & spin-lock	stainless steel	161
LF33	47mm	stopper & spin-lock	stainless steel	161
LF3/5	47mm	stopper	PES	162
MF3/5	47mm	stopper	PES	163