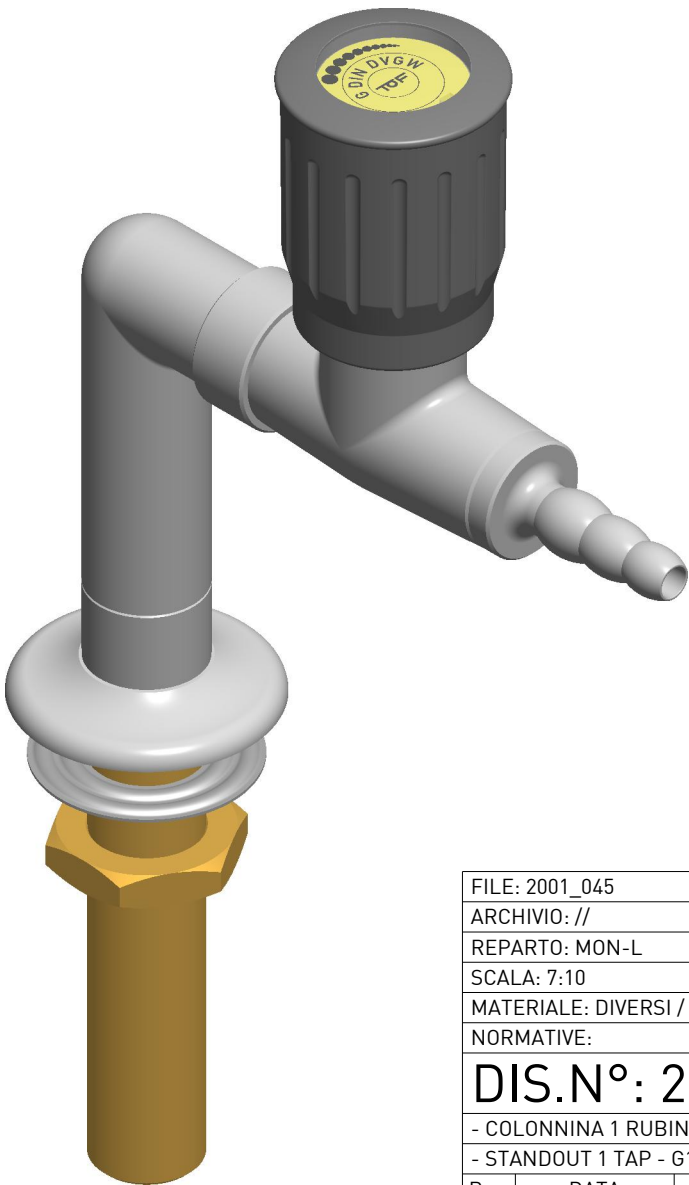
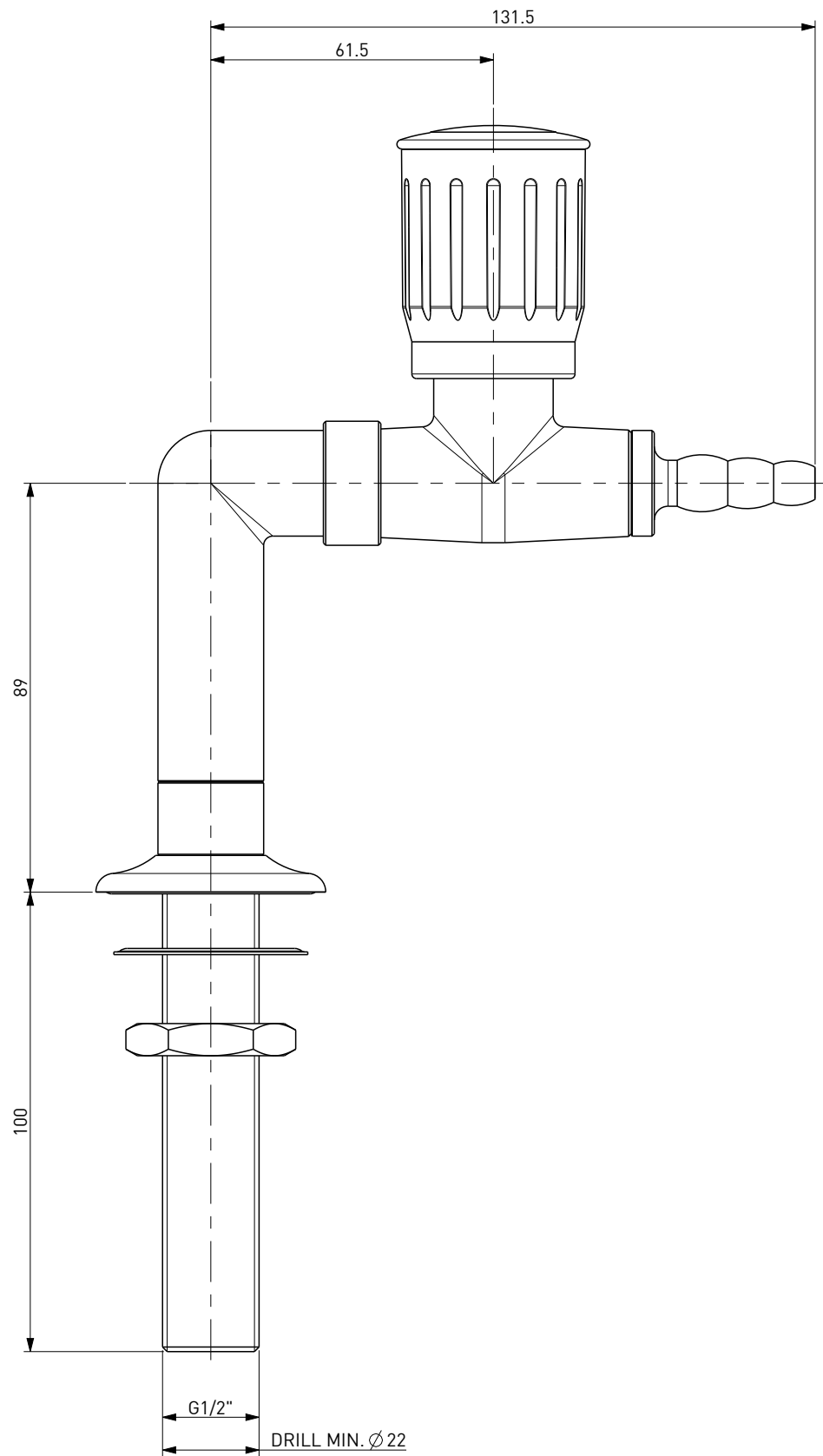





NOTE:

- FILETTO FISSAGGIO SECONDO NORMA UNI EN ISO 228/1
- BECCUCCIO SECONDO NORMA DIN12898
- CODICE COLORE SECONDO NORMA DIN EN 13792
- PRESSIONE MAX. DI LAVORO 0.2BAR/2.9PSI
- VITONE CON SISTEMA DI SICUREZZA PUSH AND TURN
- THREAD CONNECTION ACCORDING UNI EN ISO 228/1
- NOZZLE ACCORDING DIN12898
- COLOR CODE ACCORDING DIN EN 13792
- MAX. WORKING PRESSURE 0.2BAR/2.9PSI
- HEADWORK WITH PUSH AND TURN SYSTEM



CODE	FINISH	NOTES
2001/45	GRIGIO / GREY	
2001/45-B	BIANCO / WHITE	
2001/45-A	NERO / BLACK	
2001/45-C1	GRIGIO / GREY	RAL 7035

FILE: 2001_045		DISEGNO DI PROPRIETA' RISERVATA A TUTTI GLI EFFETTI DI LEGGE			 ITALIAN MANUFACTURERS SINCE 1948
ARCHIVIO: //					
REPARTO: MON-L		TOLLERANZE UNI EN ISO 22768-F	 QUOTE IMPORTANTI		
SCALA: 7:10		TRANNE DOVE DIVERSAMENTE INDICATO	 ESPONENTE DI MODIFICA		
MATERIALE: DIVERSI / VARIOUS					
NORMATIVE:					
DIS.N°: 2001/45			GRUPPO		
			- RUBIN. CON SCATTO DI SICUREZZA PER GAS / GAS FITTING SPRING LOADED FOR SAFETY		
- COLONNINA 1 RUBINETTO - G1/2 - MANOPOLA CILINDRICA					
- STANDOUT 1 TAP - G1/2 - CYLINDRICAL HANDLE					
Rev.	DATA	DESCRIZIONE	DIS.	DEL.	PEZZO GREZZO Kg :
2	24-07-2018	AGGIUNTO CODICE RAL 7035 / ADDED RAL 7035 CODE	BR	TD	PEZZO FINITO Kg : 1.143
PRIMA EMISSIONE: 04-05-2010					DISEGNO STAMPO:
NOTE:					FORMATO: A3 FOGLIO: 1