

Digital Refractometer for Ethylene Glycol Measurements

- Years warranty 2
- ATC
- Dual Display
- Self diagnostics
- CE



The **MA888** is an optical instrument that employs the measurement of the refractive index to determine the % volume and freezing point of ethylene glycol based coolants or antifreeze.

The digital refractometer eliminates the uncertainty associated with mechanical refractometers and is easily portable for use in the field to optimize your cooling system.

The **MA888** refractometer is an optical device that is simple and quick to use. Samples are measured after a simple user calibration with distilled or deionized water. Within seconds, the refractive index and temperature are measured and converted into one of two measurement units; % Volume or Freezing Point.

The instrument utilizes internationally recognized references for unit conversion and temperature compensation for ethylene glycol solutions (e.g. CRC Handbook of Chemistry and Physics, 87th Edition).

The temperature (in °C or °F) is also displayed on the large dual level display along with helpful message codes.

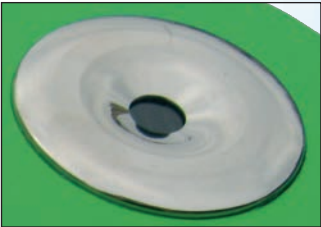
Key features include:

- Dual-level LCD
- Automatic Temperature Compensation (ATC)
- Easy setup and storage
- Battery operation with Low Power indicator (BEPS)
- Automatically turns off after 3 minutes of non-use

Specifications	MA888
Range	0 to 100% Volume 0 to -50 °C / 32 to -58 °F Freezing Point 0 to 80°C / 32 to 176°F
Resolution	0.1% Volume 0.1°C / 0.1°F Freezing Point 0.1°C / 0.1°F
Accuracy	±0.2% Volume ±0.5°C / ±1.0°F Freezing Point ±0.3°C / ±0.5°F
Light Source	yellow LED
Measurement Time	approximately 1.5 seconds
Minimum Sample Volume	100 µL (cover prism totally)
Sample Cell	SS ring and flint glass prism
Temperature Compensation	automatic between 10 and 40°C (50 to 104°F)
Case Material	ABS
Enclosure Rating	IP 65
Battery Type	1 x 9V AA (included)
Battery Life	5000 reading
Auto-shut off	after 3 minutes of non-use
Dimensions	192 x 102 x 67 mm
Weight	420 g

Ordering Information

MA888 is supplied in a carton box, complete with 9V battery and instruction manual.



Stainless Steel Sample Well and Prism

Place a few drops of the sample in the well and press the READ key.

Liquid Cristal Display (LCD)

Dual Level LCD with Primary and Secondary Display.

